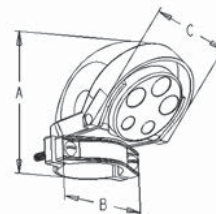


# SERVICE ENTRANCE FITTINGS

SERVICE



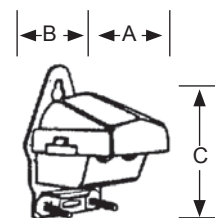
TRADE SIZE	HALEX PART #	CTN/CASE QTY	CTN/CASE WT (LBS)	DIMENSIONS (IN INCHES)		
				A	B	C
<b>Service Entrance Caps</b>				<b>Aluminum</b>		
<i>CLAMP ON TYPE</i>						
1/2"	58005	5	1.3	2.688	2.250	2.125
3/4"	58007	5	3	2.859	2.250	2.281
1"	58010	3	1.2	3.281	2.609	2.609
1 1/4"	58012B	5/25	3/14	3.250	3.094	3.094
1 1/2"	58015	3	3	4.672	3.750	3.406
2"	58020B	5	8	6.000	4.500	4.719
2 1/2"	58025	1	5	8.000	5.813	6.438
3"	58030B	1	7	8.109	6.375	6.438
3 1/2"	58035B	1	7	9.563	7.109	8.156
4"	58040B	1	7	9.344	7.953	8.156



**APPLICATION:** INDOORS OR OUTDOORS. Use in an overhead service entrance. Mounts on top of EMT, Rigid, or IMC conduit. Serves as a connecting point for the service entrance wires.  
**MATERIAL:** Copper-Free Die-Cast Aluminum. **FEATURES:** Clamp-On Style. **CERTIFICATIONS:** TO UL AND CSA REQUIREMENTS.



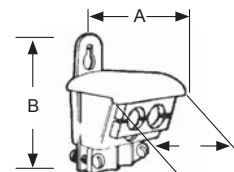
TRADE SIZE	HALEX PART #	CTN/CASE QTY	CTN/CASE WT (LBS)	DIMENSIONS (IN INCHES)		
				A	B	C
<b>Thermoplastic Service Entrance Caps</b>				<b>PVC</b>		
3#8-2	77801	5	1.3	2.000	2.719	1.969
3#1/0-2/0	77802	4	2.3	3.031	4.031	2.875
3#3/0-4/0	77803	4	2.2	3.031	4.031	2.875



**APPLICATION:** INDOORS OR OUTDOORS. Use in overhead services that utilize SEU cable. **MATERIAL:** Rigid PVC. **TYPE:** With Galvanized Steel Mounting Strap and Back Plate. **CERTIFICATIONS:** TO UL AND CSA REQUIREMENTS.



TRADE SIZE	HALEX PART #	CTN/CASE QTY	CTN/CASE WT (LBS)	DIMENSIONS (IN INCHES)		
				A	B	C
<b>Oval Service Cable Caps</b>				<b>Aluminum</b>		
3#8-#1	57499	5	2	2.000	2.969	2.172
3#1/0-4/0	57699	2	1.3	3.453	4.516	3.188



**APPLICATION:** INDOORS OR OUTDOORS. Use in overhead services that utilize SEU cable. **MATERIAL:** Copper-Free Aluminum Die-Cast **TYPE:** With cast back plate. **CERTIFICATIONS:** TO UL AND CSA REQUIREMENTS.



TRADE SIZE	HALEX PART #	CTN/CASE QTY	CTN/CASE WT (LBS)
3#3-1	77602	2	1
3#2/0-4/0	77604	4	2.25

**APPLICATION:** OUTDOOR. To provide protection to service entrance cables.



TRADE SIZE	HALEX PART #	CTN/CASE QTY	CTN/CASE WT (LBS)
3/4"	77907	5	0.8
1"	77910	5	1
1 1/4"	77912	5	2
1 1/2"	77915	4	2
2"	77920	2	2

**APPLICATION:** INDOORS OR OUTDOORS. Use in overhead service entrance. Mounts on top of PVC conduit. Serves as connecting point for service entrance wires. **MATERIAL:** PVC. **FEATURES:** Glue on type. **CERTIFICATIONS:** TO UL AND CSA REQUIREMENTS.